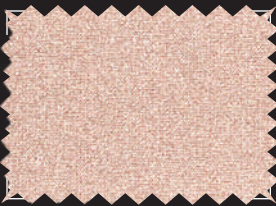


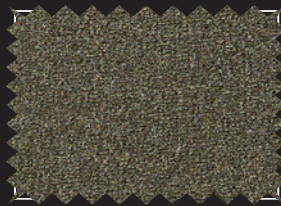


N132 ORION REC

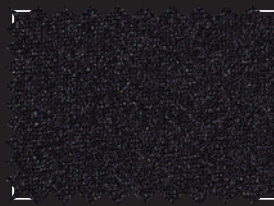
COMPOSITION (ASTM Standard ±3% tolerance)		WEIGHT (±5% TOLERANCE)	WIDTH (+3% / -2% TOLERANCE)	COURSES	WALES							
80% RECYCLED SHINY POLYAMIDE	20% ELASTANE HIGH-CHLORINE RESISTANCE	190 g/m ²	150 cm	46 / cm	26 / cm							
		5.6 oz/yd ²	59 inches	117 / inches	66 / inches							
DIMENSIONAL CHANGE OF FABRIC AFTER HL AATCC 135-2015 (1 WASH, NORMAL CYCLE AT 41 DEGREE CELSIUS LINE DRY)		RESISTANCE TO PILLING ASTM D 3512-RANDOM TUMBLE AT 30 MINUTES PHOTOGRAPHIC RATING STD		ULTRAVIOLET PROTECTION FACTOR (U.P.F.) AATCC 183-2010								
max -5% WIDTH	max -5% LENGHT	4.0 to 4.5		40 to 50+								
STRETCH TO DYNAMOMETER (±15%) ASTM D4964 - LOAD 20 Lbs	SOLID						PFP					
	110% WIDTH (min 94% - max 127%)			195% LENGTH (min 166% - max 224%)			105% WIDTH (min 89% - max 121%)			195% LENGTH (min 166% - max 224%)		
MODULUS @ % ELONGATION (30% - 50% - 70%)	30%	50%	70%	30%	50%	70%	30%	50%	70%	30%	50%	70%
	0.3 - 0.8	0.9 - 1.8	1.9 - 3.6	0.0 - 0.0	0.4 - 0.9	0.9 - 1.7	0.4 - 1.0	1.1 - 2.3	2.4 - 4.6	0.0 - 0.2	0.4 - 0.9	0.9 - 1.7
CARE LABELLING CODES												



2518 champagne



9917 dark olive



2319 black



1410 white / 1910 PFP

AATCC Standards

COLOUR	CHLORINATED WATER AATCC 162	LIGHT AATCC 16-20 AFU	WATER 38°C AATCC 107								SEA WATER 38°C AATCC 106								PERSPIRATION AATCC 15								CROCKING AATCC 8		WASHING 49°C AATCC 61-2A							
	C.C.	C.C.	C.C.	AC	CO	PA	PL	PC	WO	C.C.	AC	CO	PA	PL	PC	WO	C.C.	AC	CO	PA	PL	PC	WO	S.CO DRY	S.CO WET	C.C.	AC	CO	PA	PL	PC	WO				
	1410 / 1910	3	3	4.5	5	5	5	5	5	5	4.5	5	5	5	5	5	5	4.5	5	5	5	5	5	5	5	5	5	4.5	5	5	5	5	5	5		
9917	4.5	4.5	4.5	4	4	3.5	4	4	3.5	4.5	4.5	4	3.5	4	4	4	4.5	4.5	4.5	4	4.5	4.5	4.5	4	3.5	4.5	4.5	4.5	3.5	4.5	4.5	4				
2518	4	4.5	4.5	4.5	4.5	4.5	4.5	4.5	4.5	4.5	4.5	4.5	4.5	4.5	4.5	4.5	4.5	4.5	4.5	4.5	4.5	4.5	4.5	4.5	4.5	4.5	4.5	4.5	4.5	4.5	4.5	4.5	4.5			
2319	4.5	4.5	4.5	4.5	4	4	4.5	4.5	4	4.5	4.5	4	4	4.5	4.5	4	4.5	4.5	4.5	4.5	4.5	4.5	4.5	4	3	4.5	4.5	4	3.5	4.5	4.5	4				

ISO Standards

COLOUR	CHLORINATED WATER ISO 105-E03	LIGHT ISO 105-B02	WATER ISO 105-E01			SEA WATER ISO 105-E02			ALKALINE PERSPIRATION PH 8.0 ISO 105-E04			ACID PERSPIRATION PH 5.5 ISO 105-E04			CROCKING ISO 105-X12		WASHING 40°C ISO 105-C06 A2S			
	C.C.	C.C.	C.C.	CO	PA	C.C.	CO	PA	C.C.	CO	PA	C.C.	CO	PA	S.CO DRY	S.CO WET	C.C.	CO	PA	
	1410 / 1910	2-3	3	4-5	5	5	4-5	5	5	4-5	5	5	4-5	5	5	5	5	4-5	5	5
9917	4	4-5	4-5	4-5	4	4-5	4-5	4	4-5	4-5	4	4-5	4-5	4	4	4	3-4	4-5	4-5	4
2518	3	4-5	4-5	4-5	4-5	4-5	4-5	4-5	4-5	4-5	4-5	4-5	4-5	4-5	4-5	4-5	4-5	4-5	4-5	4-5
2319	4-5	4-5	4-5	4-5	4	4-5	4-5	4	4-5	4-5	4	4-5	4-5	4	4	4	3	4-5	4-5	4

Available colors all colors displayed in the main **Shiny color card** are available for sampling on this item. Please refer to the main color card for the color fastness performance of each color. You can place bulk orders with MCQ 70 mts in any shade of our collection.

Special notes/warnings we recommend carrying out lab tests for color matches, molding, bonding and applications on fabrics in order to prevent problems from arising during garments production. Please carefully check physical data and color fastness forecasts.

N132 ORION REC

SWIMWEAR

DANCEWEAR

UNDERWEAR

Our Shiny brightest collection now sparkles even more and goes GREEN with Orion Rec, the brand new version of the classic trendiest article of our collections. Bright shiny colors, unchanged performances and good compression. The perfect choice for glamorous swimwear.



SHINY



HIGH CHLORINE RESISTANCE



UV PROTECTION



FOUR WAY STRETCH



COMFORT FIT



PRINTABLE



CU1004128GRS-2023-00035481

CREORA
Highclo