

N330 SHIRA MOTION

SWIMWEAR

SPORTSWEAR

DANCEWEAR

This fabric has the exclusive feature of combining style and flexibility. Due to its heavier weight, this fabric can ensure the best fit and comfort, good elasticity and vibrant shininess, for unique activewear and heavy swimwear garments. It's ideal to combine fashion, performance and comfort.



SHINY



HIGH CHLORINE
RESISTANCE



UV
PROTECTION



FOUR WAY
STRETCH



SHAPE
RETENTION



COMFORT
FIT



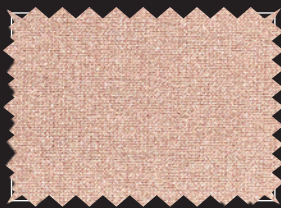
DIRECT
DIGITAL PRINT

CREORA
Highclo

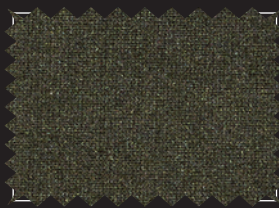


N330 SHIRA MOTION

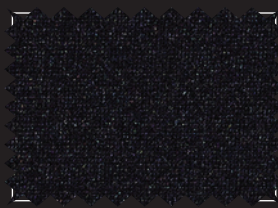
COMPOSITION (ASTM Standard ±3% tolerance)		WEIGHT (±5% TOLERANCE)	WIDTH (+3% / -2% TOLERANCE)	COURSES	WALES			
80% VIRGIN SHINY POLYAMIDE	20% ELASTANE HIGH-CHLORINE RESISTANCE	220 g/m ²	150 cm	46 / cm	26 / cm			
		6.5 oz/yd ²	59 inches	117 / inches	66 / inches			
DIMENSIONAL CHANGE OF FABRIC AFTER HL AATCC 135-2015 (1 WASH, NORMAL CYCLE AT 41 DEGREE CELSIUS LINE DRY)		RESISTANCE TO PILLING ASTM D 3512-RANDOM TUMBLE AT 30 MINUTES PHOTOGRAPHIC RATING STD		ULTRAVIOLET PROTECTION FACTOR (U.P.F.) AATCC 183-2010				
max -5% WIDTH	max -5% LENGHT	4.0 to 4.5		50+				
STRETCH TO DYNAMOMETER (±15%) ASTM D4964 - LOAD 20 Lbs			SOLID					
			105% WIDTH (min 89% - max 121%)			155% LENGTH (min 132% - max 178%)		
MODULUS @ % ELONGATION (30% - 50% - 70%)			30%	50%	70%	30%	50%	70%
			0.4 - 0.9	1.1 - 2.1	2.5 - 4.5	0.2 - 0.6	0.9 - 1.7	1.7 - 3.0
CARE LABELLING CODES								



2518 champagne



9917 dark olive



2319 black



1410 white / 1910 PPF

AATCC Standards

COLOUR	CHLORINATED WATER AATCC 162	LIGHT AATCC 16-20 AFU	WATER 38°C AATCC 107							SEA WATER 38°C AATCC 106							PERSPIRATION AATCC 15						CROCKING AATCC 8		WASHING 48°C AATCC 61-2A								
	C.C.	C.C.	C.C.	AC	CO	PA	PL	PC	WO	C.C.	AC	CO	PA	PL	PC	WO	C.C.	AC	CO	PA	PL	PC	WO	S.CO DRY	S.CO WET	C.C.	AC	CO	PA	PL	PC	WO	
	1410 / 1910	3.5	3	4.5	5	5	5	5	5	5	4.5	5	5	5	5	5	5	4.5	5	5	5	5	5	5	5	5	4.5	5	5	5	5	5	5
9917	4	4.5	4.5	4.5	4.5	4	4.5	4.5	4	4.5	4.5	4.5	4	4.5	4.5	4	4.5	4.5	4.5	4.5	4.5	4.5	4.5	4.5	4.5	3.5	4.5	4.5	4.5	3.5	4.5	4.5	4
2518	4	4.5	4.5	4.5	4.5	4.5	4.5	4.5	4.5	4.5	4.5	4.5	4.5	4.5	4.5	4.5	4.5	4.5	4.5	4.5	4.5	4.5	4.5	4.5	4.5	4.5	4.5	4.5	4.5	4.5	4.5	4.5	4.5
2319	4.5	4.5	4.5	4	4	4	4.5	4.5	4	4.5	4	4	4	4.5	4.5	4	4.5	4.5	4.5	4.5	4.5	4.5	4.5	4	3	4.5	4.5	4	4	4.5	4.5	4	

ISO Standards

COLOUR	CHLORINATED WATER ISO 105-E03	LIGHT ISO 105-B02	WATER ISO 105-E01			SEA WATER ISO 105-E02			ALKALINE PERSPIRATION PH 8.0 ISO 105-E04			ACID PERSPIRATION PH 5.5 ISO 105-E04			CROCKING ISO 105-X12		WASHING 40°C ISO 105-C06 A2S			
	C.C.	C.C.	C.C.	CO	PA	C.C.	CO	PA	C.C.	CO	PA	C.C.	CO	PA	S.CO DRY	S.CO WET	C.C.	CO	PA	
	1410 / 1910	2-3	3	4-5	5	5	4-5	5	5	4-5	5	5	4-5	5	5	5	5	4-5	5	5
9917	3	4-5	4-5	4-5	4-5	4-5	4-5	4-5	4-5	4-5	4-5	4-5	4-5	4-5	4-5	4-5	3-4	4-5	4-5	4
2518	3-4	4-5	4-5	4-5	4-5	4-5	4-5	4-5	4-5	4-5	4-5	4-5	4-5	4-5	4-5	4-5	4-5	4-5	4-5	4-5
2319	4	4-5	4-5	4-5	4	4-5	4-5	4	4-5	4-5	4	4-5	4-5	4	4	3	4-5	4-5	4	

Available colors the 4 colors presented in this page are always available for sampling. If you would like to choose a color from the main **Shiny color card**, you can enjoy a MCQ of only 70 mts for bulk orders. However, the resulting color shade and the color fastness performance may be slightly different. We will submit to your attention a lab dip swatch for approval before going on with the bulk production.

Special notes/warnings we recommend carrying out lab tests for color matches, molding, bonding and applications on fabrics in order to prevent problems from arising during garments production. Please carefully check physical data and color fastness forecasts.