

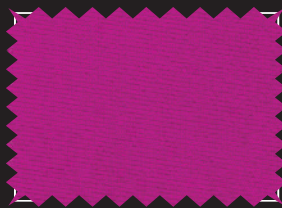


N813 CLOUD REC

COMPOSITION <small>(ASTM Standard ±3% tolerance)</small>		WEIGHT <small>(±5% TOLERANCE)</small>	WIDTH <small>(+3% / -2% TOLERANCE)</small>	COURSES	WALES								
87% RECYCLED POLYAMIDE	13% ELASTANE CHLORINE RESISTANT	140 g/m ²	150 cm	38 / cm	28 / cm								
		4.1 oz/yd ²	59 inches	97 / inches	71 / inches								
DIMENSIONAL CHANGE OF FABRIC AFTER HL AATCC 135-2015 (1 WASH, NORMAL CYCLE AT 41 DEGREE CELSIUS LINE DRY)		RESISTANCE TO PILLING ASTM D 3512-RANDOM TUMBLE AT 30 MINUTES PHOTOGRAPHIC RATING STD			ULTRAVIOLET PROTECTION FACTOR (U.P.F.) AATCC 183-2010								
max -5% WIDTH		max -5% LENGHT		4.0 to 4.5									
STRETCH TO DYNAMOMETER (±15%) ASTM D4964 - LOAD 20 Lbs		SOLID						PFP					
		125% WIDTH <small>(min 106% - max 144%)</small>			130% LENGTH <small>(min 110% - max 149%)</small>			115% WIDTH <small>(min 98% - max 132%)</small>			130% LENGTH <small>(min 110% - max 149%)</small>		
MODULUS @ % ELONGATION (30% - 50% - 70%)		30%	50%	70%	30%	50%	70%	30%	50%	70%	30%	50%	70%
		0.0 - 0.3	0.3 - 0.7	0.7 - 1.9	0.1 - 0.5	0.5 - 1.0	1.0 - 2.0	0.0 - 0.4	0.4 - 1.2	1.2 - 2.4	0.1 - 0.6	0.6 - 1.2	1.2 - 2.2
CARE LABELLING CODES													



● 5316 new blu cina



0614 amaranta



7219 black



5710 white / 1210 PFP

AATCC Standards

COLOUR	CHLORINATED WATER AATCC 162	LIGHT AATCC 16-20 AFU	WATER 38°C AATCC 107								SEA WATER 38°C AATCC 106								PERSPIRATION AATCC 15								CROCKING AATCC 8		WASHING 49°C AATCC 61-2A							
	C.C.	C.C.	C.C.	AC	CO	PA	PL	PC	WO	C.C.	AC	CO	PA	PL	PC	WO	C.C.	AC	CO	PA	PL	PC	WO	S.CO	S.CO	C.C.	AC	CO	PA	PL	PC	WO				
																									DRY	WET										
5710 / 1210	3	3	4.5	5	5	5	5	5	5	4.5	5	5	5	5	5	5	4.5	5	5	5	5	5	5	5	5	4.5	5	5	5	5	5	5				
0614	4	4.5	4.5	4	3.5	3.5	4	4	3.5	4.5	4	3.5	3.5	4	3.5	3.5	4.5	4.5	4.5	4.5	4.5	4.5	4.5	4.5	3	4.5	4.5	4.5	3	4	4.5	4.5				
5316 ●	3	3.5	4.5	3.5	3	2.5	3	3	2.5	4.5	4	3	2.5	3	3	2.5	4.5	4.5	4	3.5	4.5	4.5	3.5	4.5	3.5	4	4.5	3.5	3	4.5	4.5	3.5				
7219	4.5	4.5	4.5	4	4	3.5	3.5	4	3.5	4.5	4.5	4	3.5	4	4.5	4	4.5	4.5	4.5	4	4.5	4.5	4.5	4.5	3	4.5	4.5	4	3.5	4	4.5	4				

ISO Standards

COLOUR	CHLORINATED WATER ISO 105-E03	LIGHT ISO 105-B02	WATER ISO 105-E01			SEA WATER ISO 105-E02			ALKALINE PERSPIRATION PH 8.0 ISO 105-E04			ACID PERSPIRATION PH 5.5 ISO 105-E04			CROCKING ISO 105-X12		WASHING 40°C ISO 105-C06 A2S		
	C.C.	C.C.	C.C.	CO	PA	C.C.	CO	PA	C.C.	CO	PA	C.C.	CO	PA	S.CO	S.CO	C.C.	CO	PA
	50 mg/l															DRY	WET		
5710 / 1210	2-3	3	4-5	5	5	4-5	5	5	4-5	5	5	4-5	5	5	5	5	4-5	5	5
0614	3-4	4-5	4-5	4-5	4	4-5	4-5	4	4-5	4-5	4	4-5	4-5	4	4-5	3	4-5	4-5	3-4
5316 ●	2-3	3-4	4-5	4	3-4	4-5	4	3-4	4-5	3-4	3	4-5	4	3	4-5	3-4	4-5	3-4	3-4
7219	4-5	4-5	4-5	4-5	4	4-5	4-5	4	4-5	4-5	4	4-5	4-5	4	4-5	3	4-5	4-5	3-4

Available colors the 4 colors presented in this page are always available for sampling. If you would like to choose a color from the main Polyamide color card, you can enjoy a MCQ of only 70 mts for bulk orders. However, the resulting color shade and the color fastness performance may be slightly different. We will submit to your attention a lab dip swatch for approval before going on with the bulk production.

Special notes/warnings we recommend carrying out lab tests for color matches, molding, bonding and applications on fabrics in order to prevent problems from arising during garments production. Please carefully check physical data and color fastness forecasts.

N813 CLOUD REC

SWIMWEAR

LINING

UNDERWEAR

Ultra-light, ultra pleasant, ultra soft-touch buttery 100% Recycled multi-filament Polyamide. Cloud Rec light soul is best designed for delightful fresh lining, underwear and glamorous swimwear applications.



CHLORINE RESISTANCE



UV PROTECTION



FOUR WAY STRETCH



SOFT TOUCH



COMFORT FIT



DIRECT DIGITAL PRINT



CU1004128GRS-2023-00035481