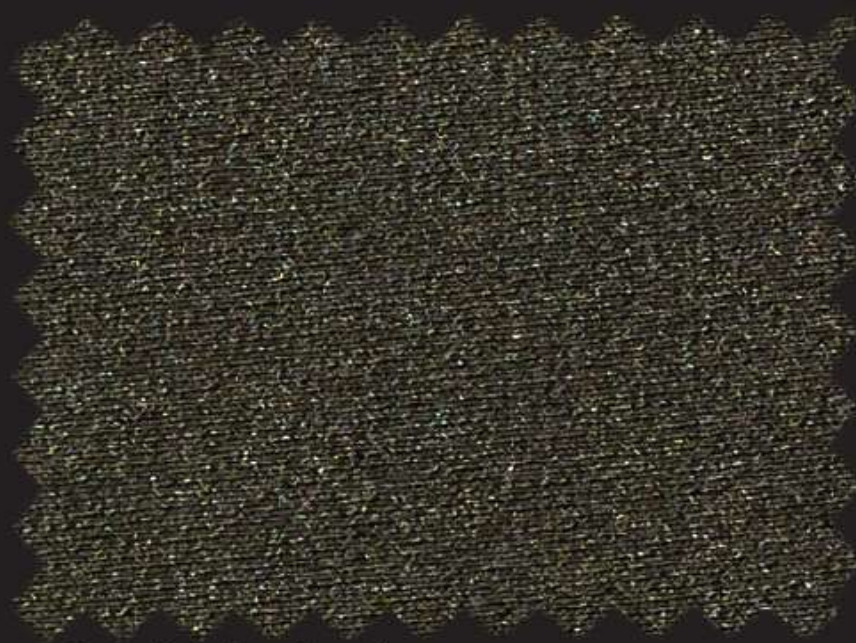


N132 ORION REC



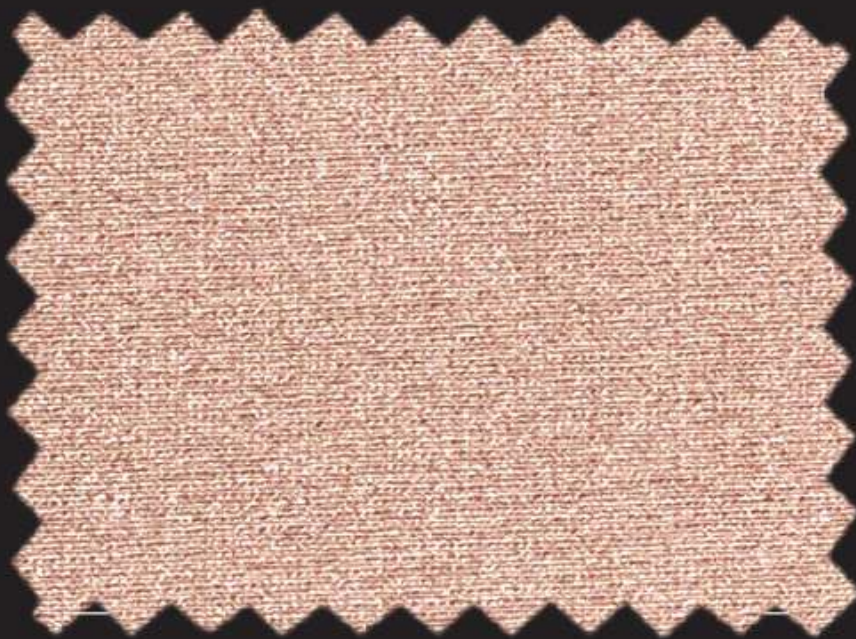
2319 nero



9917 dark olive



1410 white



2518 champagne

N132 ORION REC

Applications

> Swimwear

Our Shiny brightest collection now sparkles even more and goes GREEN with Orion Rec, the brand new version of the classic trendiest article of our collections. Bright shiny colors, unchanged performances and good compression. The perfect choice for glamorous swimwear.



2319 black



9917 dark olive




1410 white



2518 champagne

Composition

Recycled Polyamide		Elastane					
80%		20%					
Weight ($\pm 5\%$)		Width ($+3\%/-2\%$)					
190 g/m²	285 g/m lin.	150 cm					
Courses	Wales	Tolerance for composition (standard ASTM)					
46/cm	26/cm	$\pm 3\%$					
Dimensional Change of fabric after HL AATCC 135-2015 (1 wash, normal cycle at 41 degree Celsius line dry)		Max	Max				
		-5%	-5%				
		Width	Length				
Resistance to pilling ASTM D 3512-Random tumble at 30 minutes photographic rating STD		4 to 4.5					
Ultraviolet Protection Factor (U.P.F.) AATCC 183-2010		50+					
Stretch to dynamometer ($\pm 15\%$) ASTM D 4964 - LOAD 20 LBS		110%	195%				
		Width (min 94% - max 127%)	Length (min 166% - max 224%)				
Modulus % elongation (30% - 50% - 70%)		30%	50%	70%	30%	50%	70%
		0.3-0.8	0.9-1.8	1.9-3.6	0.0-0.8	0.4-0.9	0.9-1.7
		Width Lbs			Length Lbs		
Care labelling codes							

AATCC Standards

COLOUR	CHLORINATED WATER AATCC 162	LIGHT AATCC 16-20 AFU	WATER 38°C AATCC 107							SEA WATER 38°C AATCC 106							PERSPIRATION AATCC 15							CROCKING AATCC 8		WASHING 49°C AATCC 61-2A						
	C.C.	C.C.	C.C.	AC	CO	PA	PL	PC	WO	C.C.	AC	CO	PA	PL	PC	WO	C.C.	AC	CO	PA	PL	PC	WO	S.CO DRY	S.CO WET	C.C.	AC	CO	PA	PL	PC	WO
	1410	3	3	4.5	5	5	5	5	5	5	4.5	5	5	5	5	5	5	4.5	5	5	5	5	5	5	5	5	4.5	5	5	5	5	5
9917	4.5	4.5	4.5	4	4	3.5	4	4	3.5	4.5	4.5	4	3.5	4	4	4	4.5	4.5	4.5	4	4.5	4.5	4.5	4	3.5	4.5	4.5	4.5	3.5	4.5	4.5	4
2518	4	4.5	4.5	4.5	4.5	4.5	4.5	4.5	4.5	4.5	4.5	4.5	4.5	4.5	4.5	4.5	4.5	4.5	4.5	4.5	4.5	4.5	4.5	4.5	4.5	4.5	4.5	4.5	4.5	4.5	4.5	4.5
2319	4.5	4.5	4.5	4.5	4	4	4.5	4.5	4	4.5	4.5	4	4	4.5	4.5	4	4.5	4.5	4.5	4.5	4.5	4.5	4.5	4	3	4.5	4.5	4	3.5	4.5	4.5	4

ISO Standards

COLOUR	CHLORINATED WATER ISO 105-E03	LIGHT ISO 105-B02	WATER ISO 105-E01			SEA WATER ISO 105-E02			ALKALINE PERSPIRATION PH 8.0 ISO 105-E04			ACID PERSPIRATION PH 5.5 ISO 105-E04			CROCKING ISO 105-X12		WASHING 40°C ISO 105-C06 A2S		
	C.C.	C.C.	C.C.	CO	PA	C.C.	CO	PA	C.C.	CO	PA	C.C.	CO	PA	S.CO DRY	S.CO WET	C.C.	CO	PA
	1410	2-3	3	4-5	5	5	4-5	5	5	4-5	5	5	4-5	5	5	5	5	4-5	5
9917	4	4-5	4-5	4-5	4	4-5	4-5	4	4-5	4-5	4	4-5	4-5	4	4	3-4	4-5	4-5	4
2518	3	4-5	4-5	4-5	4-5	4-5	4-5	4-5	4-5	4-5	4-5	4-5	4-5	4-5	4-5	4-5	4-5	4-5	4-5
2319	4-5	4-5	4-5	4-5	4	4-5	4-5	4	4-5	4-5	4	4-5	4-5	4	4	3	4-5	4-5	4

Available colors: all colors displayed in the main Shiny color card are available for sampling on this item. Please refer to the main color card for the color fastness performance of each color. You can place bulk orders with MCQ 70 mts in any shade of our collection.

Special notes/warnings: we recommend carrying out lab tests for color matches, molding, bonding and applications on fabrics in order to prevent problems from arising during garments production. Please carefully check physical data and color fastness forecasts.

NEW ARTICLE



N132 ORION REC



high chlorine resistat



UV protection



two way stretch



comfort fit