

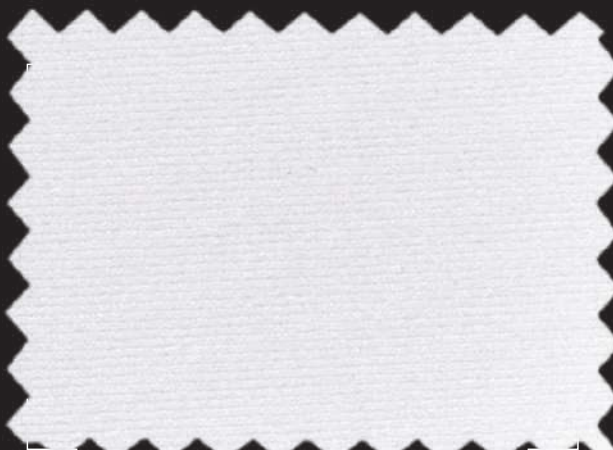
P740 FOX REC



6619 black



**2413 neon pink*



3310 white - 3710 white PFP



10717 deep teal

P740 FOX REC

Applications

> Activewear

Fox Rec connects perfectly eco-friendly and fit approaches. It offers comfortable soft feeling, superior elasticity, power and breathability. Made with 100% recycled polyester, this fabric is the best sustainable choice for high-performance leggings and sports bras, helping to keep body shape and freshness thanks to its quick-dry function.



6619 black

*2413 neon pink

3310 white - 3710 white PFP

10717 deep teal

Composition

Recycled Polyester		Elastane					
84%		16%					
Weight (±5%)		Width (+3%/-2%)					
215 g/m²	331 g/m lin.	153 cm					
Courses	Wales	Tolerance for composition (standard ASTM)					
44/cm	26/cm	±3%					
Dimensional Change of fabric after HL AATCC 135-2015 (1 wash, normal cycle at 41 degree Celsius line dry)		Max	Max				
		-5%	-5%				
		Width	Length				
Resistance to pilling ASTM D 3512-Random tumble at 30 minutes photographic rating STD		4 to 4.5					
Ultraviolet Protection Factor (U.P.F.) AATCC 183-2010		50+					
Stretch to dynamometer (±15%) ASTM D 4964 - LOAD 20 LBS		125%	180%				
		Width	Length				
Modulus % elongation (30% - 50% - 70%)		(min 106% - max 144%)					
		30%	50%	70%	30%	50%	70%
Care labelling codes		0.1-0.7	0.7-1.6	1.3-3.8	0.0-0.4	0.6-1.4	1.4-2.2
		Width Lbs		Length Lbs			

AATCC Standards

COLOUR	CHLORINATED WATER AATCC 162	LIGHT AATCC 16-20 AFU	WATER 38°C AATCC 107							SEA WATER 38°C AATCC 106							PERSPIRATION AATCC 15							CROCKING AATCC 8		WASHING 49°C AATCC 61-2A						
	C.C.	C.C.	C.C.	AC	CO	PA	PL	PC	WO	C.C.	AC	CO	PA	PL	PC	WO	C.C.	AC	CO	PA	PL	PC	WO	S.CO DRY	S.CO WET	C.C.	AC	CO	PA	PL	PC	WO
3310	4	4	4.5	5	5	5	5	5	5	4.5	5	5	5	5	5	5	4.5	5	5	5	5	5	5	5	5	5	4.5	5	5	5	5	5
3710	4	4	4.5	5	5	5	5	5	5	4.5	5	5	5	5	5	5	4.5	5	5	5	5	5	5	5	5	4.5	5	5	5	5	5	
*2413	4.5	3 ¹	4.5	4	4.5	4	4.5	4.5	4.5	4.5	4	4.5	4	4.5	4.5	4.5	4.5	4.5	4.5	4.5	4.5	4.5	4.5	4	4.5	3	4	2.5	4	4.5	4	
10717	4.5	4	4.5	3.5	4	3.5	4	4.5	4	4.5	3.5	4	3.5	4	4.5	4	4.5	4	4.5	4	4.5	4.5	4	4.5	4	4.5	4	4.5	3.5	4	4.5	4
6619	4.5	4.5	4.5	3.5	4	3	3.5	4	3.5	4.5	3.5	4	3	3.5	4	3.5	4.5	4	4.5	4	4.5	4.5	4	3	3.5	4.5	3.5	4	3	3.5	4	3.5

¹ Fluorescent Colours - CF TO LIGHT AATCC 16-10 AFU

ISO Standards

COLOUR	CHLORINATED WATER ISO 105-E03	LIGHT ISO 105-B02	WATER ISO 105-E01			SEA WATER ISO 105-E02			ALKALINE PERSPIRATION PH 8.0 ISO 105-E04			ACID PERSPIRATION PH 5.5 ISO 105-E04			CROCKING ISO 105-X12		WASHING 40°C ISO 105-C06 A2S		
	C.C.	C.C.	C.C.	CO	PA	C.C.	CO	PA	C.C.	CO	PA	C.C.	CO	PA	S.CO DRY	S.CO WET	C.C.	CO	PA
	50 mg/l																		
3310	3	4	4-5	5	5	4-5	5	5	4-5	5	5	4-5	5	5	5	5	4-5	5	5
3710	3	4	4-5	5	5	4-5	5	5	4-5	5	5	4-5	5	5	5	5	4-5	5	5
*2413	4	2-3	4-5	4-5	4	4-5	4-5	4	4-5	4-5	4	4-5	4-5	4	4-5	4	4-5	4	3
10717	4	4	4-5	4-5	4	4-5	4-5	4	4-5	4-5	4	4-5	4-5	4	4-5	4	4-5	4	3-4
6619	4-5	4-5	4-5	4	3-4	4-5	4	3-4	4-5	4	3-4	4-5	4	3-4	3	3-4	4-5	4	3-4

Available colors: the 4 colors presented in this page are always available for sampling. If you would like to choose a color from the main Polyester color card, you can enjoy a MCQ of only 70 mts for bulk orders. However, the resulting color shade and the color fastness performance may be slightly different. We will submit to your attention a lab dip swatch for approval before going on with the bulk production.

Special notes/warnings: we recommend carrying out lab tests for color matches, molding, bonding and applications on fabrics in order to prevent problems from arising during garments production. Please carefully check physical data and color fastness forecasts.



P740 FOX REC



recycled



moisture management



two way stretch



UV protection



soft touch