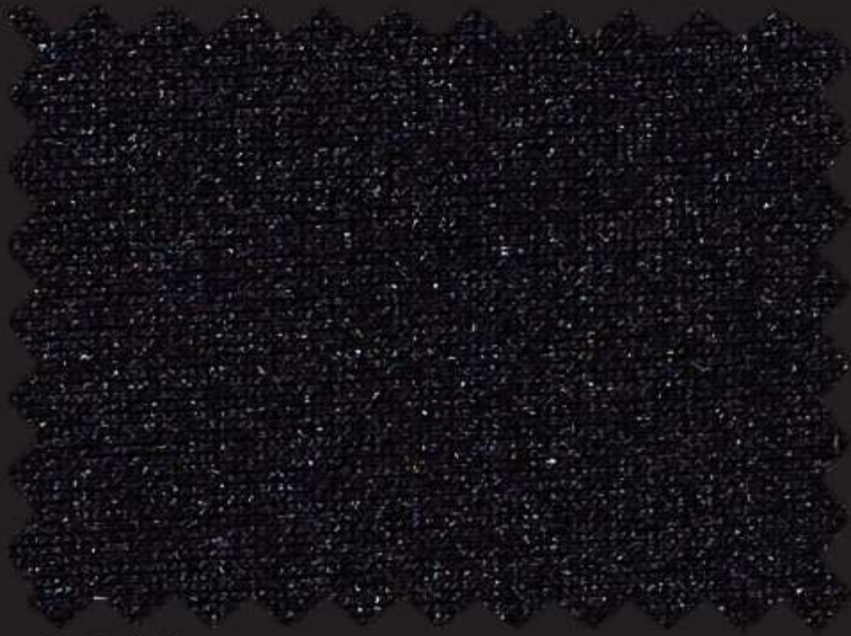


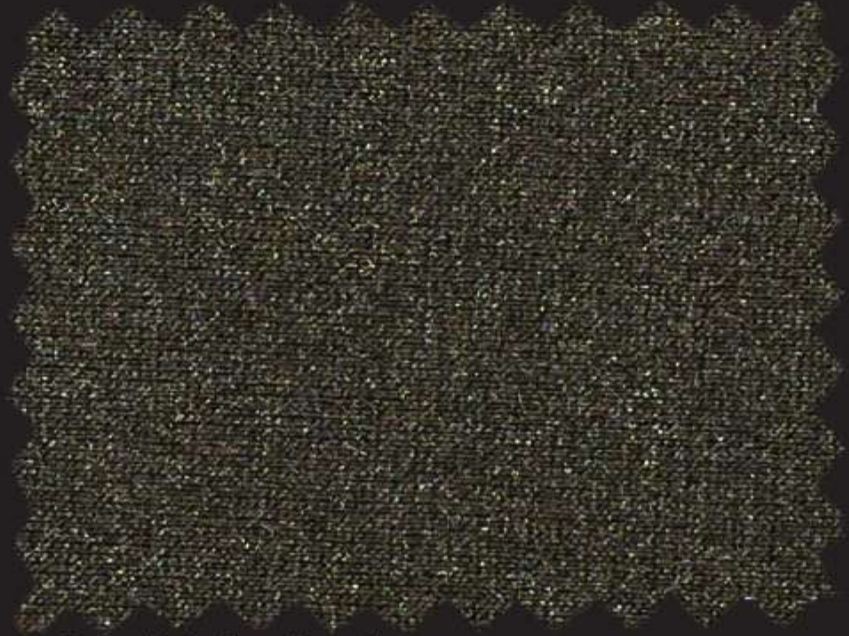


Recycled Shiny

N232 SIRIUS REC



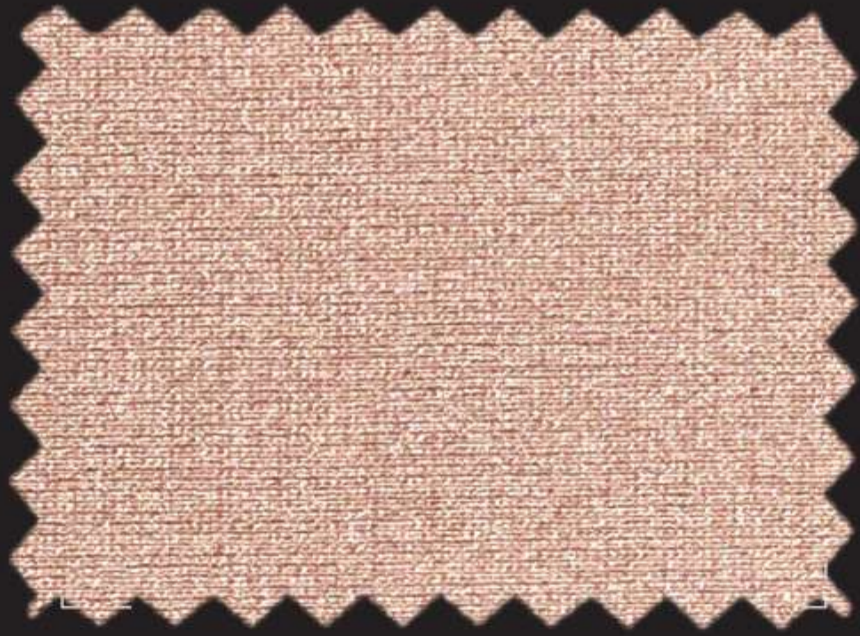
2319 nero



9917 dark olive



1410 white



2518 champagne

NEW ARTICLE



NEW ARTICLE

N232 SIRIUS REC



high chlorine resistant



UV protection



two way stretch



comfort fit

N232 SIRIUS REC

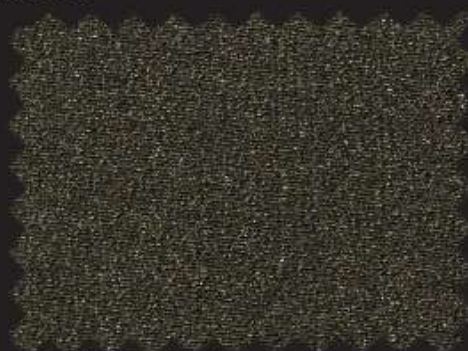
Applications

> Swimwear > Underwear

The light side of the glamorous Shiny Collection now available in its Recycled version. Preserved light weight for virtuous applications, which grants at the same time, good elastic performances and comfort. Unchanged sparkling brightness of all colors and color fastness properties. Another brand new member of the shiniest - now sustainable - collection, ideal for dancewear, fashion underwear and swimwear.



2319 black



9917 dark olive




1410 white



2518 champagne

Composition

Recycled Polyamide		Elastane	
80%		20%	
Weight (±5%)		Width (+3%/-2%)	
175 g/m²	263 g/m lin.	150 cm	
Courses	Wales	Tolerance for composition (standard ASTM)	
46/cm	27/cm	±3%	
Dimensional Change of fabric after HL AATCC 135-2015 (1 wash, normal cycle at 41 degree Celsius line dry)		Max	Max
		-5%	-5%
		Width	Length
Resistance to pilling ASTMD 3512-Random tumble at 30 minutes photographic rating STD		4 to 4.5	
Ultraviolet Protection Factor (U.P.F.) AATCC 183-2010		50+	
Stretch to dynamometer (±15%) ASTM D 4964 - LOAD 20 LBS		110%	175%
		Width	Length
		(min 94% - max 127%)	(min 149% - max 201%)
Modulus % elongation (30% - 50% - 70%)		30%	50%
		0.2-0.8	0.0-1.6
		1.0-3.3	0.0-0.3
		0.4-1.1	1.1-1.9
		Width Lbs	Length Lbs
Care labelling codes			

AATCC Standards

COLOUR	CHLORINATED WATER AATCC 162	LIGHT AATCC 16-20 AFU	WATER 38°C AATCC 107							SEA WATER 38°C AATCC 106							PERSPIRATION AATCC 15							CROCKING AATCC 8		WASHING 49°C AATCC 61-2A						
	C.C.	C.C.	C.C.	AC	CO	PA	PL	PC	WO	C.C.	AC	CO	PA	PL	PC	WO	C.C.	AC	CO	PA	PL	PC	WO	S.CO DRY	S.CO WET	C.C.	AC	CO	PA	PL	PC	WO
1410	3	3	4.5	5	5	5	5	5	5	4.5	5	5	5	5	5	5	4.5	5	5	5	5	5	5	5	5	4.5	5	5	5	5	5	5
9917	4.5	4.5	4.5	4	4	3.5	4	4	3.5	4.5	4.5	4	3.5	4	4	4	4.5	4.5	4.5	4	4.5	4.5	4.5	4	3.5	4.5	4.5	4.5	3.5	4.5	4.5	4
2518	4	4.5	4.5	4.5	4.5	4.5	4.5	4.5	4.5	4.5	4.5	4.5	4.5	4.5	4.5	4.5	4.5	4.5	4.5	4.5	4.5	4.5	4.5	4.5	4.5	4.5	4.5	4.5	4.5	4.5	4.5	4.5
2319	4.5	4.5	4.5	4.5	4	4	4.5	4.5	4	4.5	4.5	4	4	4.5	4.5	4	4.5	4.5	4.5	4.5	4.5	4.5	4.5	4	3	4.5	4.5	4	3.5	4.5	4.5	4

ISO Standards

COLOUR	CHLORINATED WATER ISO 105-E03	LIGHT ISO 105-B02	WATER ISO 105-E01			SEA WATER ISO 105-E02			ALKALINE PERSPIRATION PH 8.0 ISO 105-E04			ACID PERSPIRATION PH 5.5 ISO 105-E04			CROCKING ISO 105-X12		WASHING 40°C ISO 105-C06A2S		
	C.C. 50 mg/l	C.C.	C.C.	CO	PA	C.C.	CO	PA	C.C.	CO	PA	C.C.	CO	PA	S.CO DRY	S.CO WET	C.C.	CO	PA
1410	2-3	3	4-5	5	5	4-5	5	5	4-5	5	5	4-5	5	5	5	5	4-5	5	5
9917	4	4-5	4-5	4-5	4	4-5	4-5	4	4-5	4-5	4	4-5	4-5	4	4	3-4	4-5	4-5	4
2518	3	4-5	4-5	4-5	4-5	4-5	4-5	4-5	4-5	4-5	4-5	4-5	4-5	4-5	4-5	4-5	4-5	4-5	4-5
2319	4-5	4-5	4-5	4-5	4	4-5	4-5	4	4-5	4-5	4	4-5	4-5	4	4	3	4-5	4-5	4

Available colors: the 4 colors presented in this page are always available for sampling. If you would like to choose a color from the main Shiny color card, you can enjoy a MCQ of only 70 mts for bulk orders. However, the resulting color shade and the color fastness performance may be slightly different. We will submit to your attention a lab dip swatch for approval before going on with the bulk production.

Special notes/warnings: we recommend carrying out lab tests for color matches, molding, bonding and applications on fabrics in order to prevent problems from arising during garments production. Please carefully check physical data and color fastness forecasts.